

BeanBag Dragon

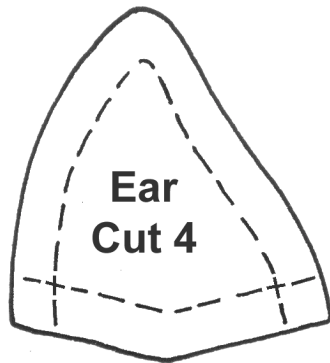
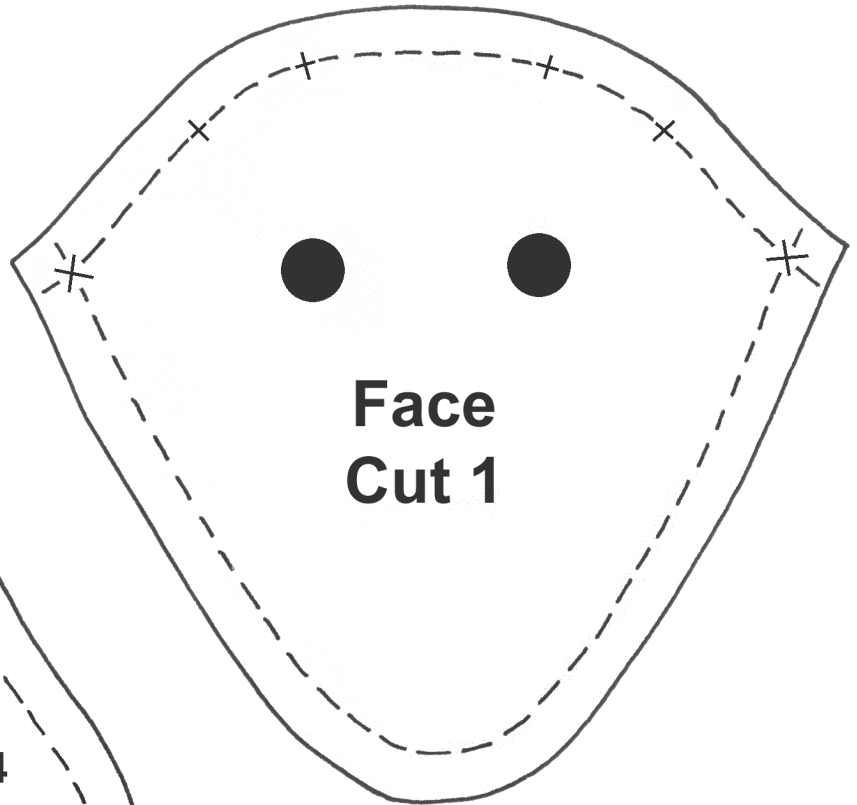
Materials required: Luxury velour (colour to suit) 50cm (20 inches) square. Polyester lining fabric 15cm x 25cm (6 inches x 10 inches). Polyester stuffing. Plastic beans. Safety eyes.

1. Cut out all pattern pieces from the velour material. Also, cut two rectangles 12cm x 15cm (4¾ inches x 6 inches) from the lining fabric – these are used to hold in all the beans.

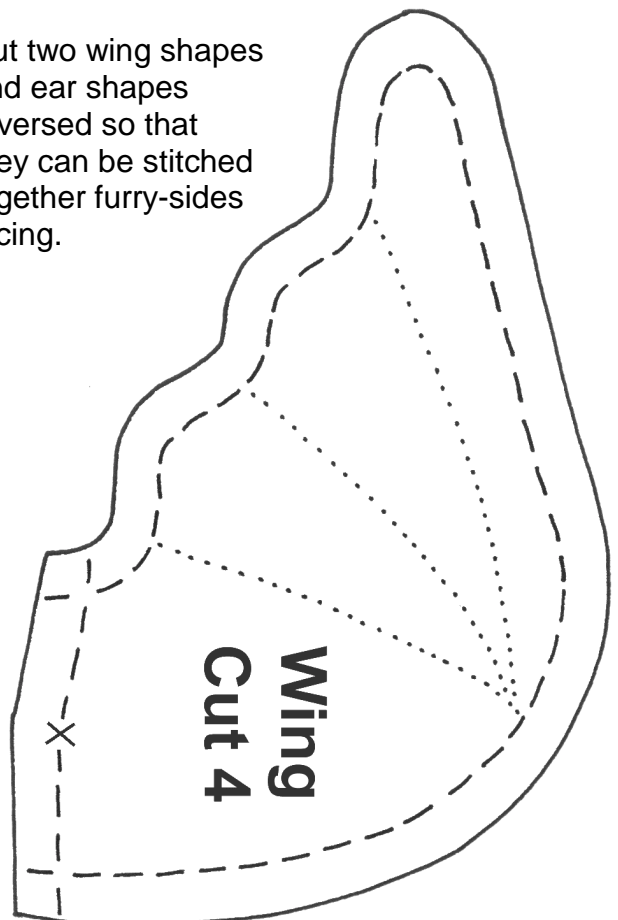
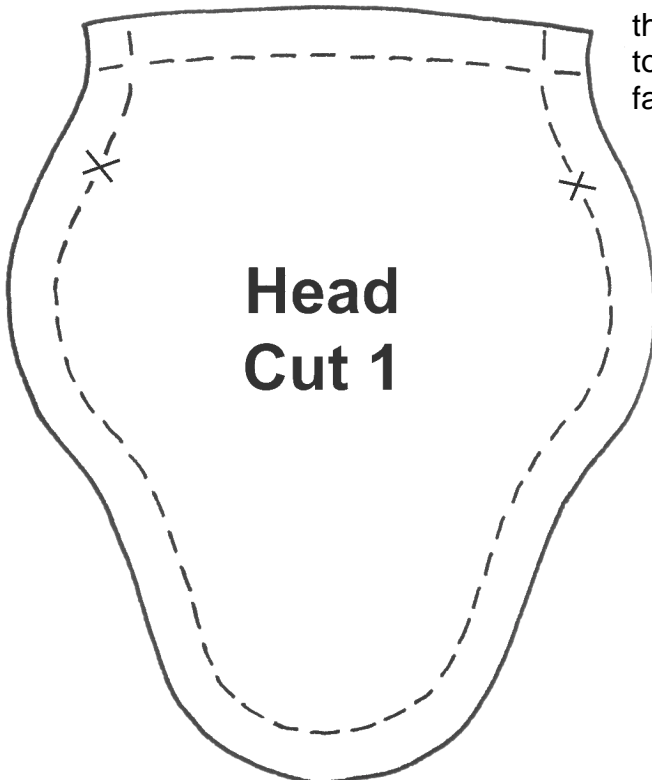
2. Stitch the ears together (furry sides facing inwards) leaving the bottom open. Turn them right sides out then fold in half (left over right). Tack the ears in place on the right (furry) side of the face at the top between the marks either side of the top, folds facing inwards, ears pointing down, and bottom of ear seam flush with top of face.

3. Stitch the neck (pg3) and face together, right sides facing matching up the crosses. You can now put in the eyes.

4. Now stitch the head (below) to the face, right sides facing, from cross to cross, leaving the neck open.

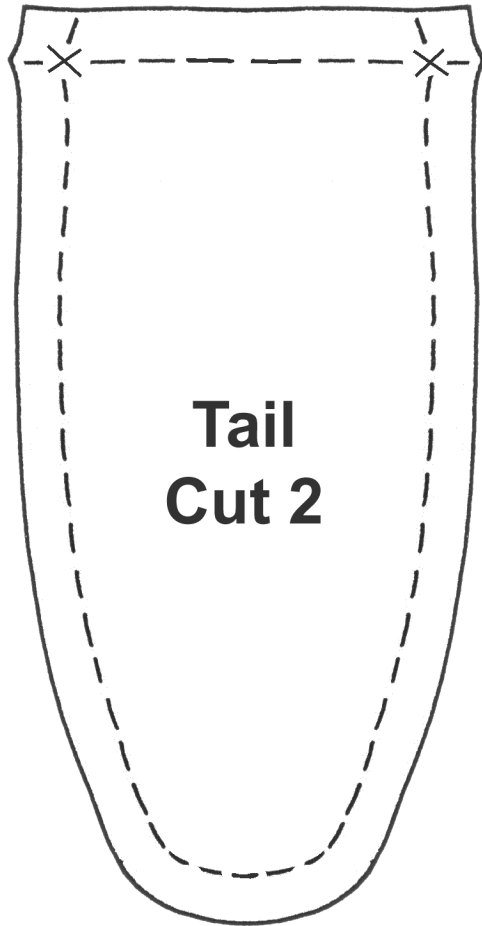


Cut two wing shapes and ear shapes reversed so that they can be stitched together furry-sides facing.



5. Stitch the wings together right sides facing, leaving the bottom open. Turn right side out, then stitch in decorative lines as indicated on pattern. Finally fold wings in half along the bottom left over right, and tack to the furry side of the upper body, fold facing forward, over the cross at the top edge (bottom of wing flush with top of upper body).

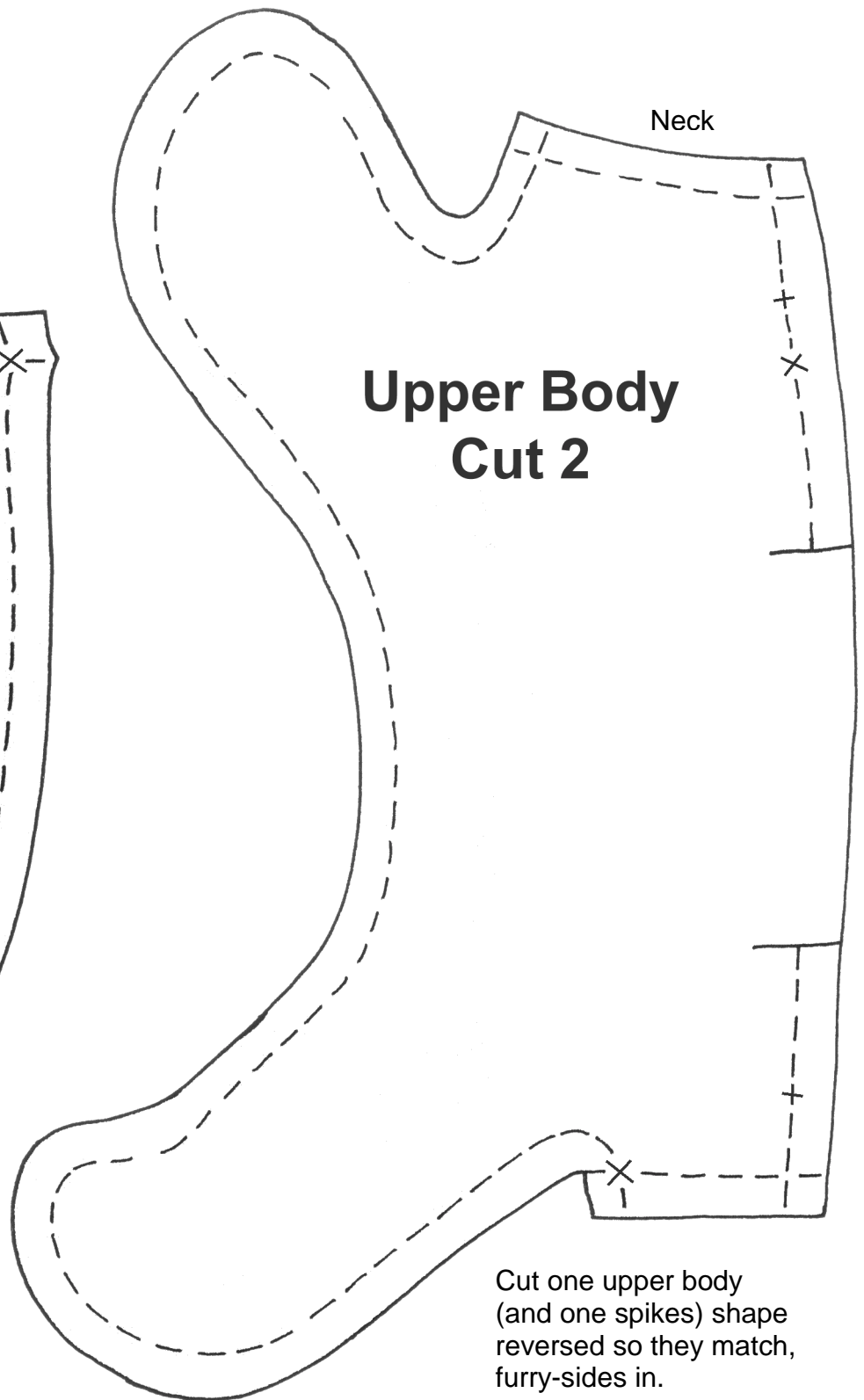
6. Spikes are optional. Sew together furry sides in along the spines. Turn right side out.



**Tail
Cut 2**

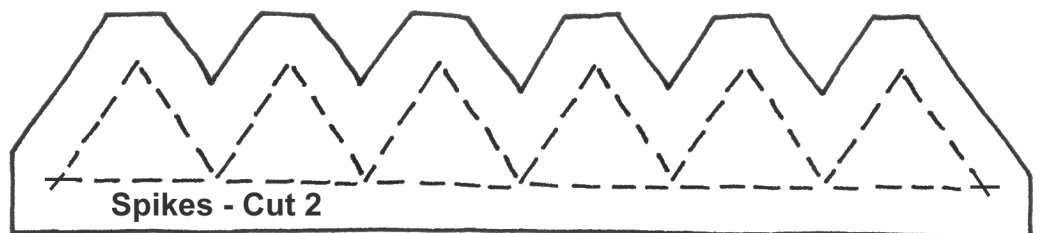
Sew along the bottom then tack them to the inside of one of the upper bodies, spines pointing down.

7. Sew the upper bodies together along the top, right sides in, leaving a gap at the top. Sew one tail piece to the two upper bodies, and the other to the main body (between the back legs – furry sides in). Sew the back legs to the body, furry sides in again.



**Upper Body
Cut 2**

Cut one upper body (and one spikes) shape reversed so they match, furry-sides in.



Spikes - Cut 2

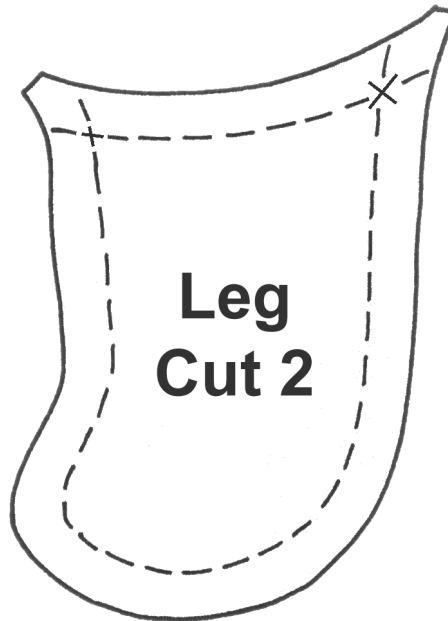
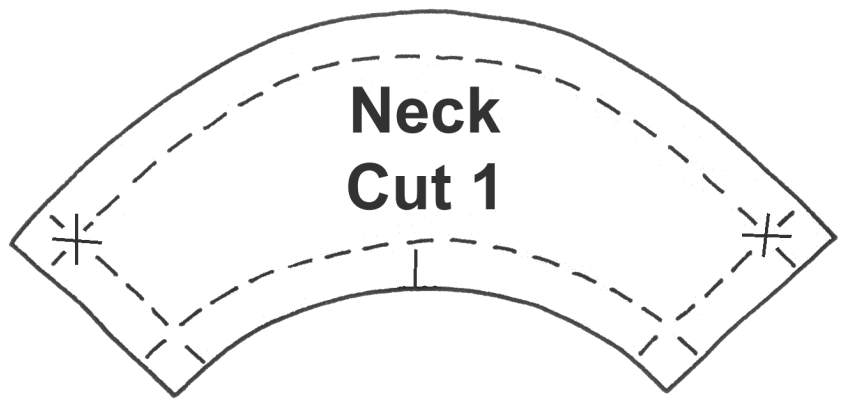
8. Now sew the two upper bodies and the main body together – furry sides inside of course – around the legs, leaving the neck open.

9. Attach the head to the body by sewing around the neck. This is with the two parts still inside out. Once the head is attached, you can turn the whole thing right side out through the opening in the top of the body.

10. Make up the lining bag that is going to contain the beads by sewing the two rectangles together along three sides (two long sides and one short). Fill the bag to about one third full of beans. Then gather the top of the bag using a running stitch and tie the ends of the threads together.

11. Fill the head, legs, and tail with polyester stuffing. Insert the beanbag into the body and pad with some more polyester stuffing. Tack the bag to the back seam of the body to keep it in place and also tack along the edges of the bag to the edge seams.

12. Finally, close the top seam with ladder stitch.



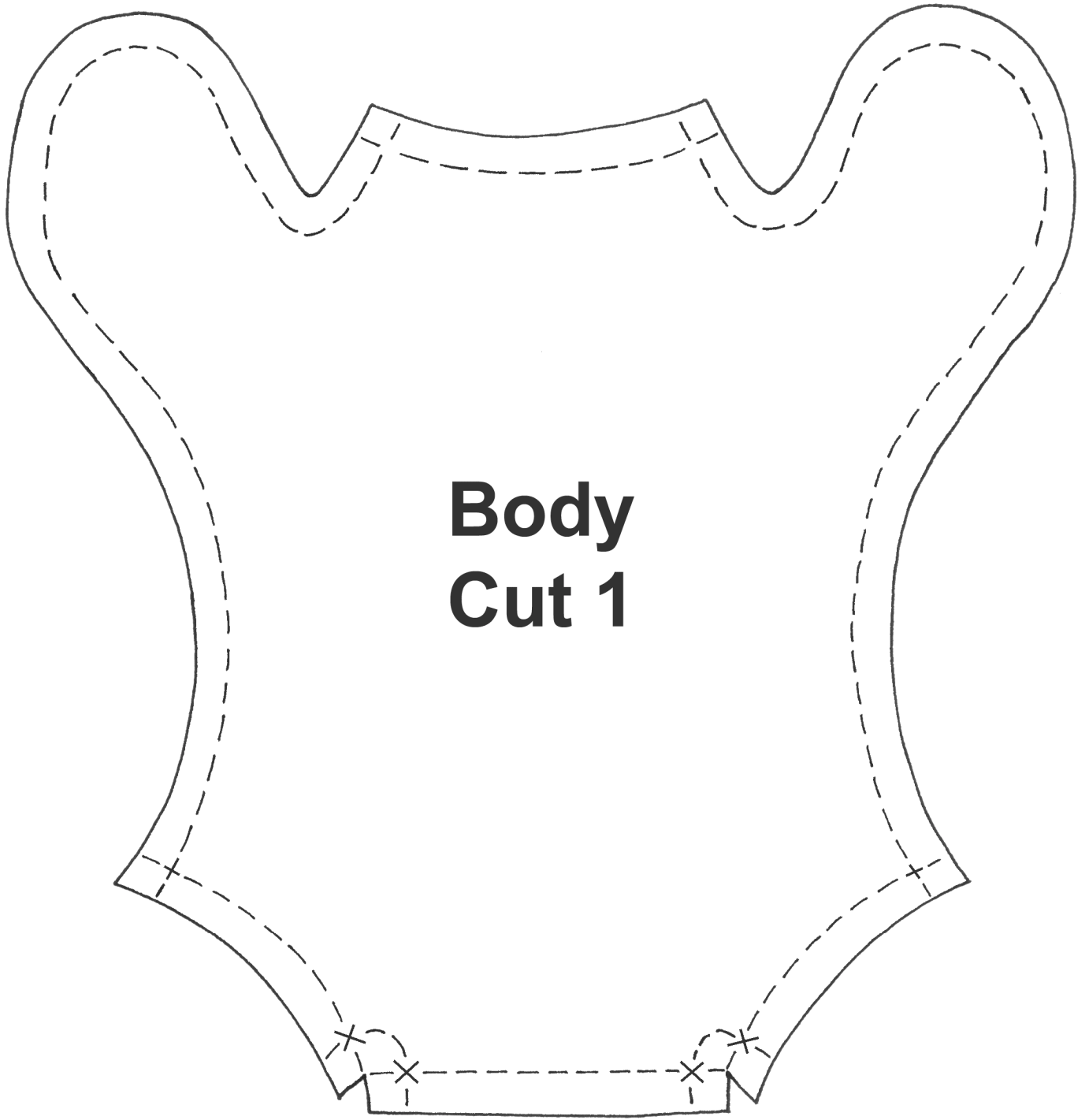
Cut one back leg reversed (mirror image) so that it fits over the upper body fore leg that is also reversed.



The neck and face join showing the orientation of the ears.



Pictured above are the upper bodies, showing the attachment of the folded wings.



**Body
Cut 1**