

# Azhreia

Materials required: Luxury velour (purple) 56cm (22 inches) square. Felt (purple) 15cm (6 inches) square. Feather trim (orange) 15cm (6 inches) long. Polyester lining fabric 15cm x 25cm (6 inches x 10 inches). Polyester stuffing. Plastic beans. Safety eyes.

1. Cut out all the pattern pieces from the velour material except for two ears and two wings which can be cut out of the felt (for contrast). When cutting the ears, wings, neck, legs, and upper body, out you should turn the pattern over after cutting half the pieces so that the two match when they are stitched together (furry sides inwards to hide the seam). Also cut out two rectangles 12cm x 15cm (4<sup>3</sup>/<sub>4</sub> inches x 6 inches) from the lining fabric to hold the beans.

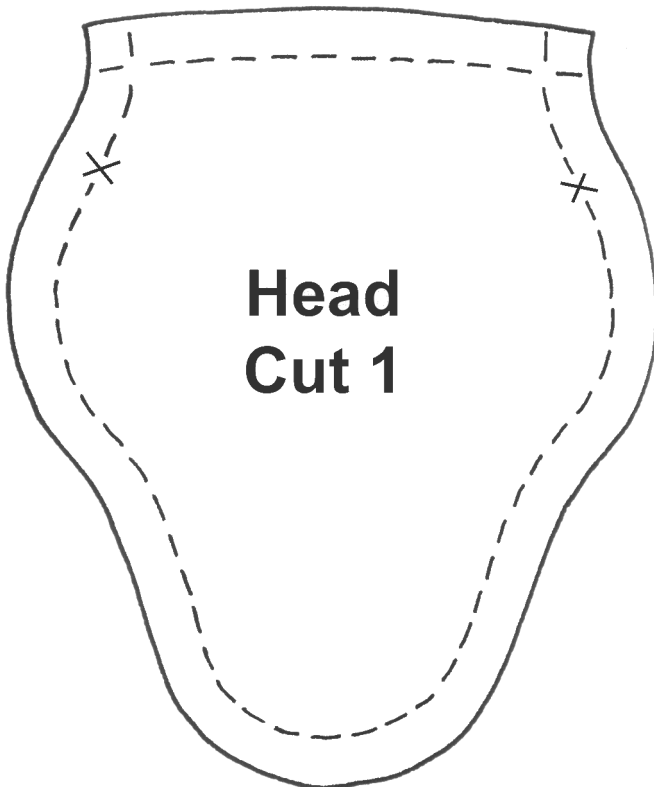
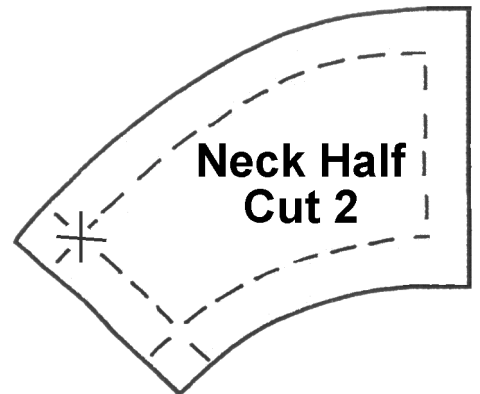
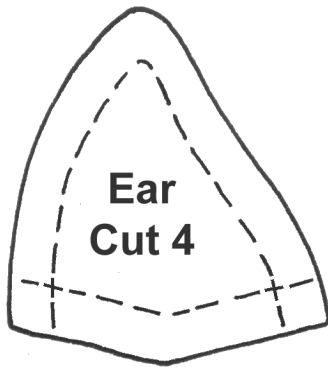
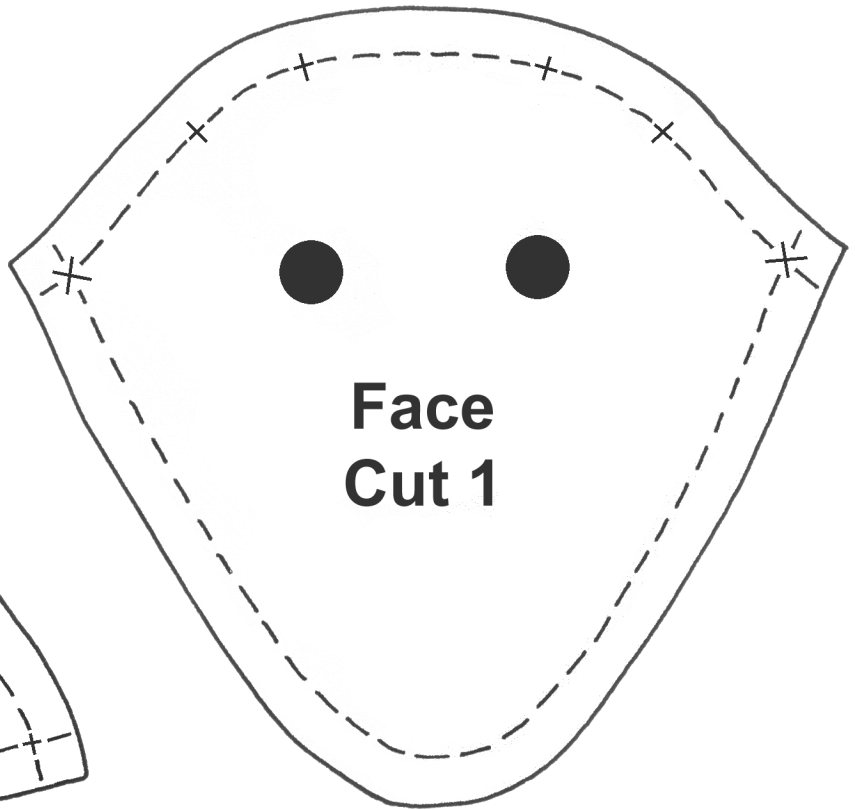
2. Stitch the ears together (felt to velour), with the furry side of the velour inwards, leaving the bottom edge open. Turn

them right side out, and then fold in half (left over right). Tack the ears in place on the furry side of the face at the top between the marks, with the fold in each ear facing inwards (so that the ears point downwards).

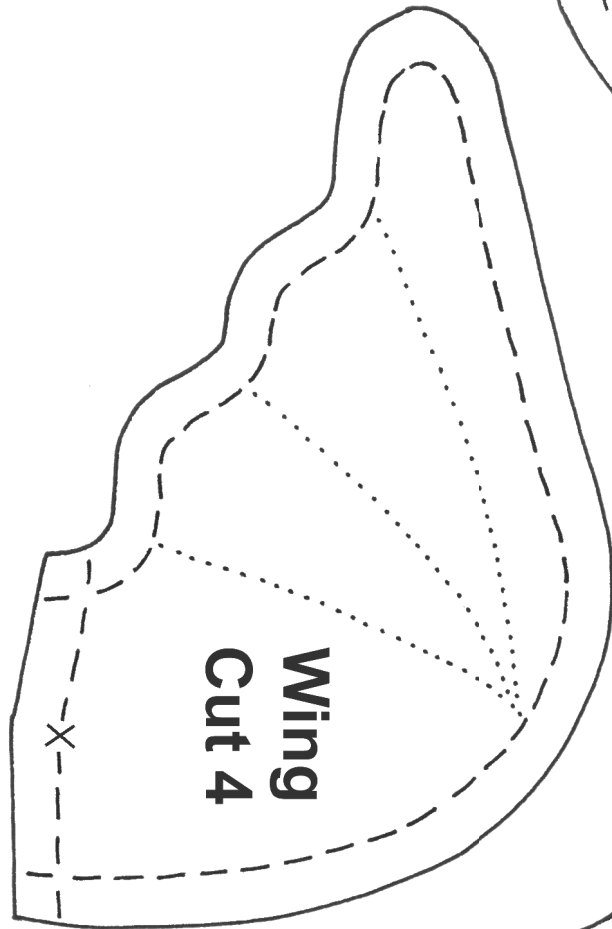
3. Stitch the neck halves to the face (not to each other), furry sides facing, matching up the crosses (the top of the neck to the top of the face). You can now put in the eyes.

4. Now stitch the head to the face, furry sides facing, match the crosses on the face to those on the head. Sew all the way around leaving the neck open.

5. You should now have the complete head inside out, but don't turn it right side out yet as it will be stitched to the body this way around.

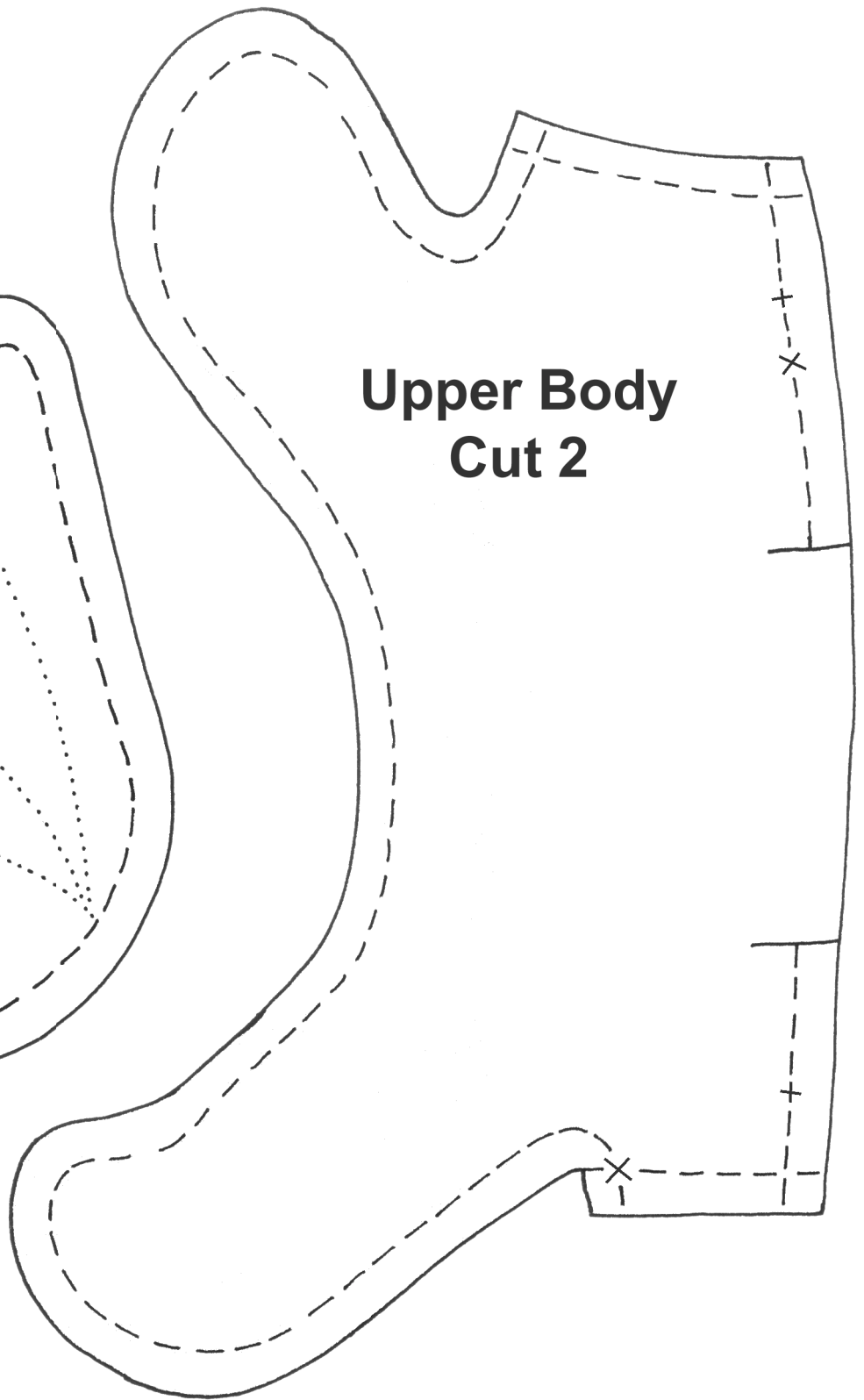


6. Stitch the wings together (velour to felt) with the furry side inwards. Leave the bottom of each wing open so you can then turn them right side out. Now you can stitch in the decorative lines as marked on the wing pattern.



**Wing  
Cut 4**

With that done, fold each wing in half along a line from the cross to where the decorative lines meet. Now tack each wing to an upper body piece on the furry side. Position the wing so the fold is facing forwards (the top of the upper body is the front), the wing hangs down the side, and over the cross (diagonal) at the top.



**Upper Body  
Cut 2**

7. At this point you can attach the feather trim to one of the upper bodies. Leave about 2.5cm (1 inch) overlap at the front of the upper body to stitch into the neck. Stitch the trim to the furry side of the upper body, over the wing, making sure that all the feathers hang down the body.

8. Sew the upper bodies together, furry sides in, at the top (being careful of the feather trim). You need to leave a gap (as indicated) so that the body can be turned right side out later.

9. Sew one tail piece to the two upper bodies, and the other tail piece to the lower body (at the bottom). These again should be sewn furry sides inwards.

10. Sew the back legs to the main (lower) body furry sides in again, making sure that they are arranged correctly to match the upper body's back (bottom) legs.

11. Now with the furry sides inwards, sew the two upper bodies to the main (lower) body. Start on one side of the neck and work all the way around the legs and tail to the other side of the neck. Leave the neck open (at the top of the pattern).

12. Attach the head construction to the body construction at the neck. The two parts are still inside out at this point. You should also sew the feather trim into the gap between the neck halves whilst sewing the neck halves together, being careful to leave all the feathers out of the seam.

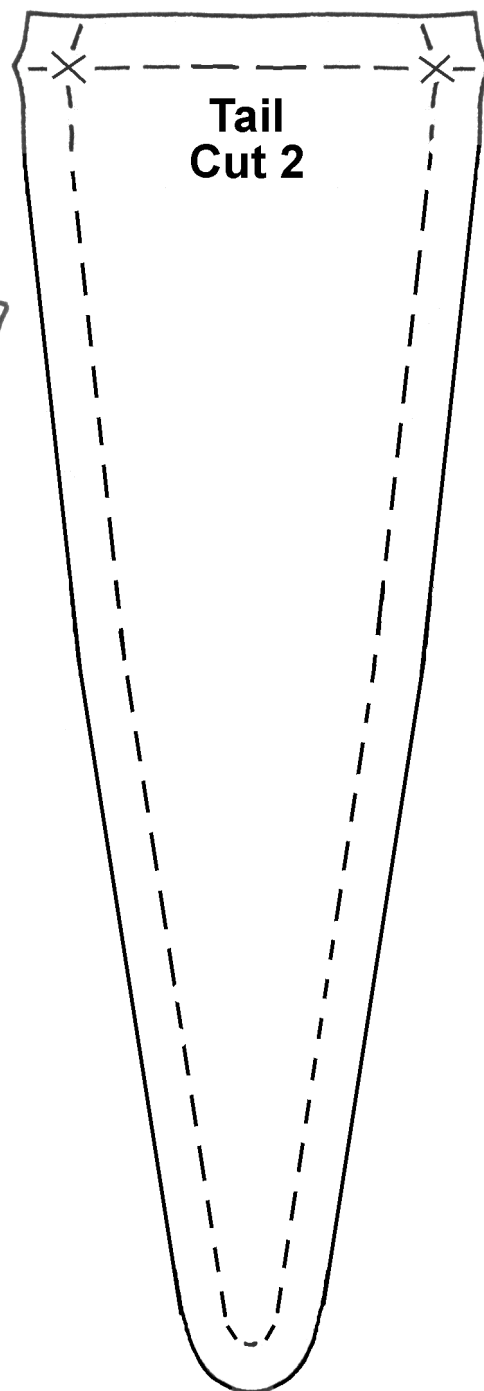
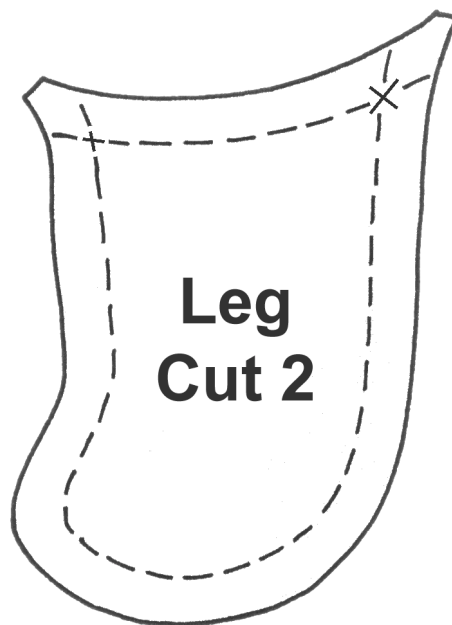
13. Turn the whole dragon right side out through the opening in the back. Be careful not to pull out the feathers or stretch any seams.

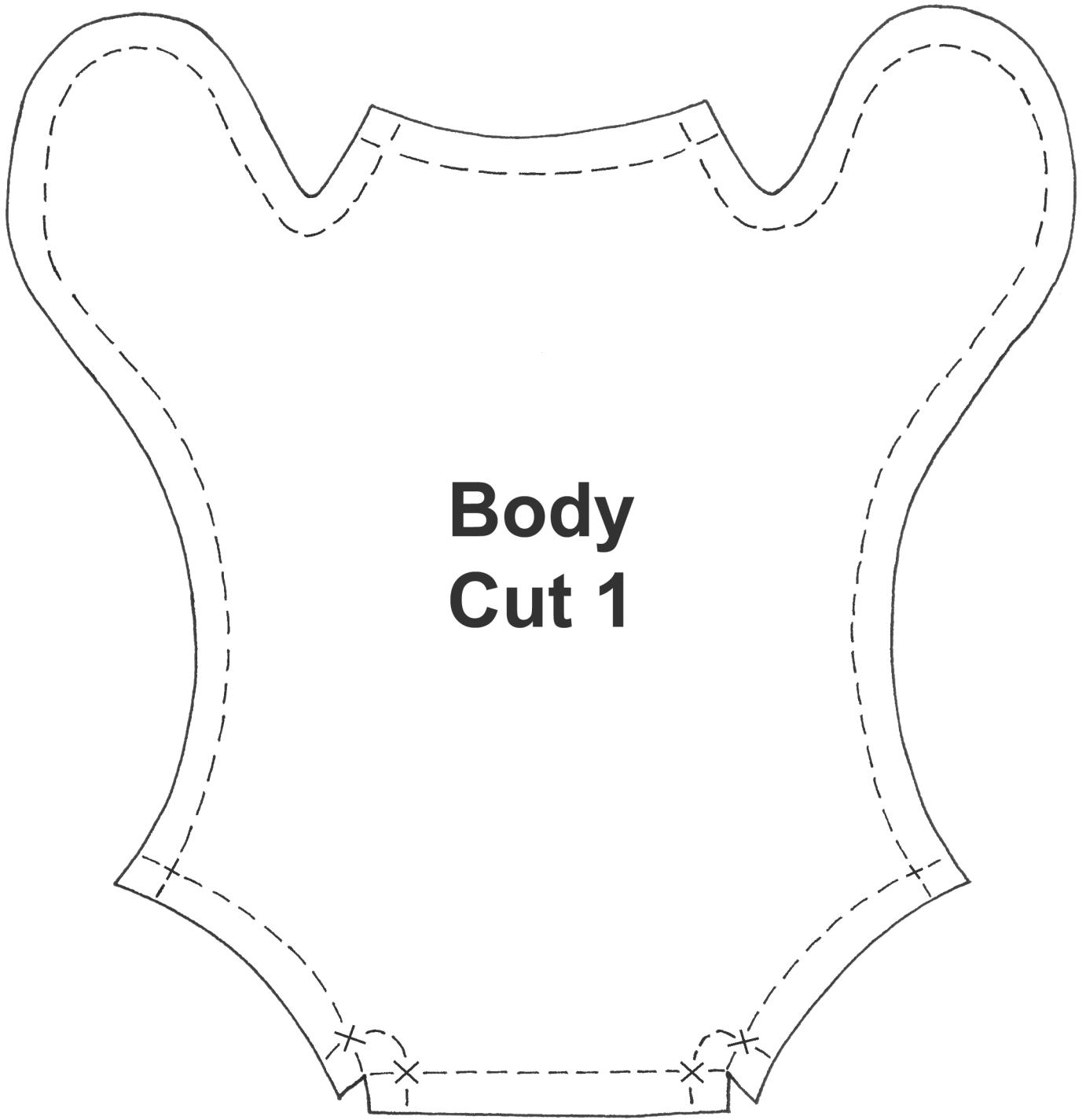
14. Make up the lining back out of the two rectangles of polyester fabric. Sew the two together along two of the long sides and one of the short. Then fill the bag about one third full of beans. Gather the open end of the bag together with a running stitch and tie the ends together.

15. Using some polyester stuffing, fill the head, legs, and tail so that they retain their shape. Now insert the beanbag into the body and pad with more polyester stuffing. It can be useful to tack the bag to the internal seams of the dragon so that it doesn't move about (just the beans do).

16. Finally, close the top of the dragon with ladder stitch.

17. You have now made your very own cuddly, beanbag Azhreia dragon.





**Body  
Cut 1**